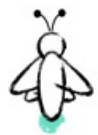




Inclusive Energy Transitions through On the Ground Action

24/01/2024, Powercoop, Coimbra

João Pedro Gouveia (jplg@fct.unl.pt)
@joaopgouveia



FireflyLab



CENSE
center for environmental
and sustainability research



CHANGE
Global Change and Sustainability Institute

NOVA

NOVA SCHOOL OF
SCIENCE & TECHNOLOGY



EU
Energy Poverty
Advisory Hub

Energy Poverty Advisory Hub



www.energypoverty.eu/

The leading EU initiative run by the European Commission at the request of the European Parliament, is a collaborative network of stakeholders and the central platform of energy poverty expertise in Europe.

Consortium



Antennas

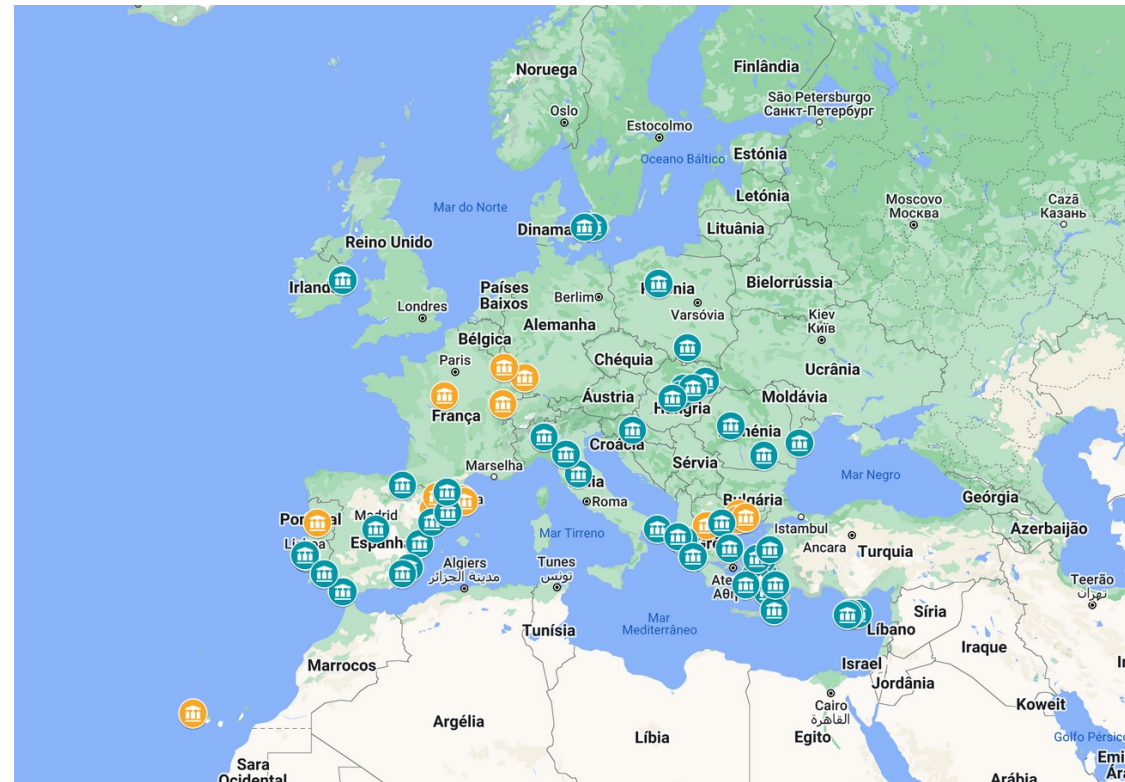


Energy Poverty Advisory Hub – Technical Assistance

Tailor-made solutions for Local Governments



2 calls (2022 & 2023)



Projects being supported **53**

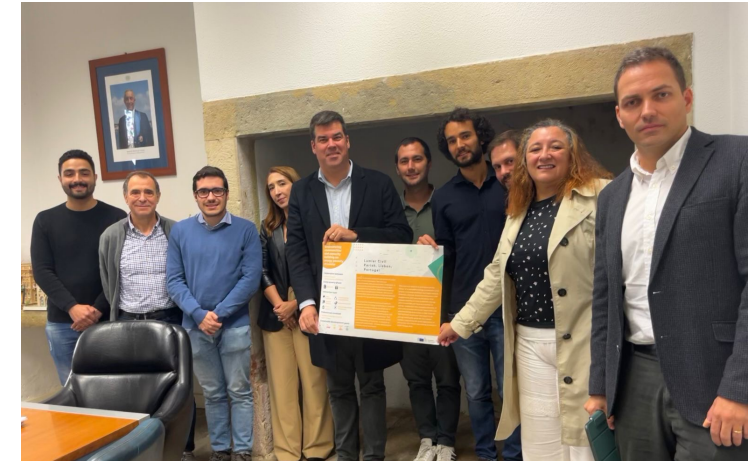
Municipalities under the Technical Assistance

Country represented **13**



Technical Assistance – REC Telheiras

- REC Telheiras, promoted by the **Local Partnership of Telheiras** and the **Lumiar Civil Parish**, was one of 23 projects selected by the **European Union Energy Poverty Advisory Hub (EPAH)** for the 1st call of the technical assistance.
- Support by **Coopérnico** and **CENSE**, **NOVA-FCT**.
- From October 2022 to July 2023.
- **Goal:** setting-up one of the first citizen-led and inclusive renewable energy communities in Portugal, tackling energy poverty and promoting energy democracy.



Kick-off meeting of the technical assistance (October 2022)



REC Telheiras - Design of the pilot project

The pilot project have 17 participants:

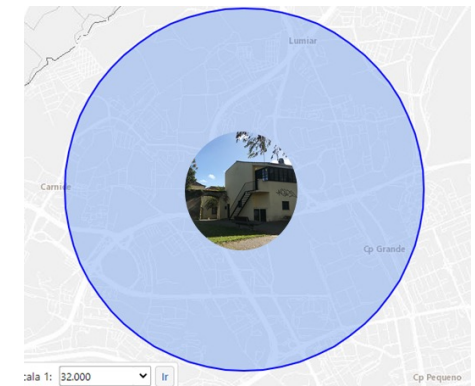
- The building itself is managed by the Lumiar Civil Parish.
- **13 member (families/residents)** that have already signed up to invest in the project and consume the electricity generated.
- **3 social members (vulnerable families)** which will be beneficiaries and active participants.

Note: participants must be within a 2 km radius of the solar PV system.



Pilot project location “The Old Winery of Saint Vicent's Farm”

Area	50 m ²
No. PV panels	16
Installed power	7,4 kWp
Electricity generation	11,5 MWh/ano
No. members	17



Technical characteristics of the pilot project and radius of REC Telheiras

REC Telheiras – Identifying and engaging with the energy-poor



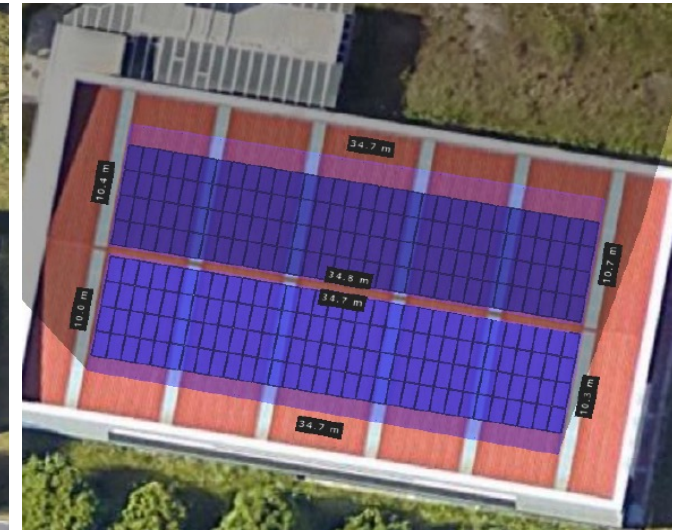
- Identified by the Lumiar Civil Parish and its social partners, as **they already receive social support**.
- Selected according to their location (2 km radius) and specific socio-economic conditions.
- Engaged by the social assistants and other intermediaries **whom they already trust**.
- Active decision to join the project and **equal voting rights**, promoting social inclusion.
- **Random lottery** to decide the participants that join the pilot project and the ones that must wait for the next one.

REC Telheiras – Identifying and engaging with the energy-poor

- Ongoing participation in the “Urban Doers Network” promoted by the DUT Partnership.
- Installation of pilot PV system (preliminary license issued in November 2023).
- Publication of a **practical guide** with key steps to develop non-profit energy communities.
- Starting a 2nd project to include a larger number of members.



Meeting of the REC Telheiras working group (June 2023)



Potential 2nd project of REC Telheiras allowing the entrance of new members



Digital One-Stop Shop – Green Menu



<https://www.menurenovacaoverde.pt>

- Descubra as possibilidades
 - Medidas rápidas
 - Isolamento e ventilação
 - Produção de eletricidade e equipamentos de uso final
 - Climatização e água quente
 - Água e vegetação
- Aconselhamento
- Implementação
- Financiamento
- Notícias

HORIS – Home Renovation Integration Services



A digital one-stop-shop
empowering homeowners
to choose the right
renovation measures,
professionals and financial
support mechanisms



Co-funded by the European Union under project n°101120497. Views and opinions expressed are however those of the author(s) only and do not necessarily reflect those of the European Commission or CINEA. Neither the European Union nor the granting authority can be held responsible for them.





Transition Point – Mobile One-Stop-Shop

Geographical Scope: 7 Municipalities

Replicable model of support and monitoring of vulnerable families to energy poverty, which integrates all phases of an intervention cycle with a view to the energy renovation of buildings.

2 maritime shipping containers

- Bridge the gap between national policies and measures and citizens;
- diagnosis of the specific needs of each family;
- identification of improvement measures;
- identification of funding opportunities and implementation agents;
- monitoring of the intervention,
- measurement of benefits.

NOVA SCHOOL OF
SCIENCE & TECHNOLOGY

IMPACT REPORT Executive Summary -

<https://gulbenkian.pt/en/publications/tackling-energy-poverty-the-potential-of-a-mobile-one-stop-shop/>